



IN Cell Analyzer

File transfer between IN Cell Analyzer and IN Carta workstations

This document describes how to connect an IN Cell Analyzer workstation to an IN Carta workstation using an ethernet cable in order to transfer data from one to the other. The IN Cell Analyzer workstation needs to be turned on to complete this procedure; however, the IN Cell Analyzer does not.

Connect the workstations

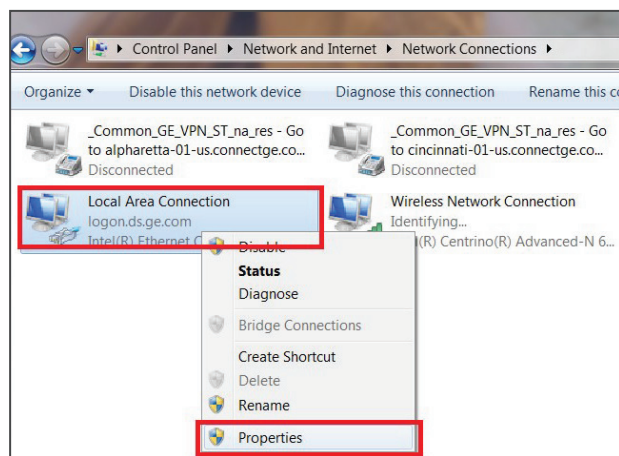
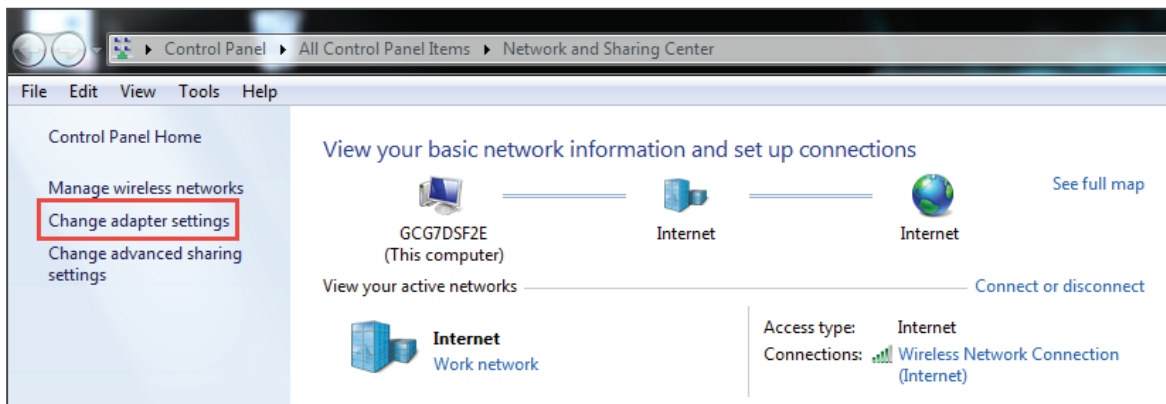
1. Using an ethernet cable, connect the IN Cell Analyzer workstation to the IN Carta workstation using any available ethernet ports.
2. Turn on the IN Cell Analyzer and IN Carta workstation.

Configure the workstations for data transfer

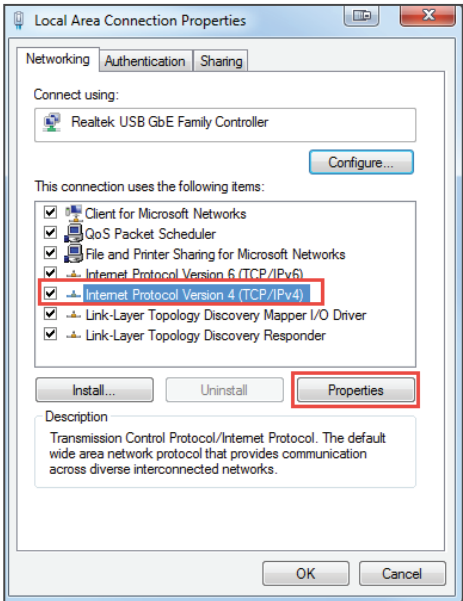
Note: There will be slight variations in the processes described for each workstation because the IN Carta workstation runs on the Windows 7 OS and the IN Cell Analyzer workstation runs on the Windows 10 OS.

Configure the IN Carta workstation

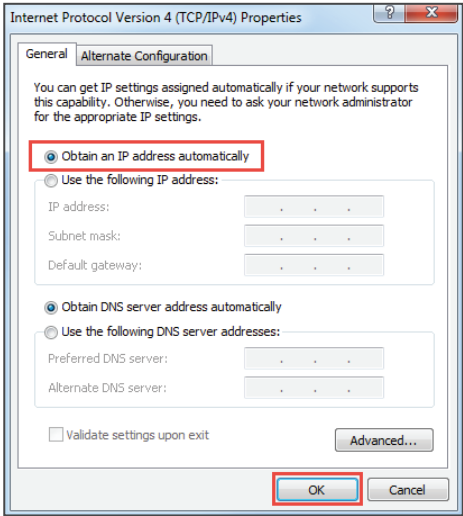
1. On the Windows Start menu, type “Network and Sharing Center” into the Search field and then click the Search icon.
2. From the menu located on the left side of the Network and Sharing Center window, select **Change adapter settings**.




- 3. Right-click **Local Area Connection** and select **Properties** from the drop-down menu.
- 4. Ensure the check box for **Internet Protocol Version 4 (TCP /IPv4)** is selected. Click to highlight the item and then click **Properties**.
Note: **Internet Protocol Version 6 (TCP /IPv6)** may also be selected.

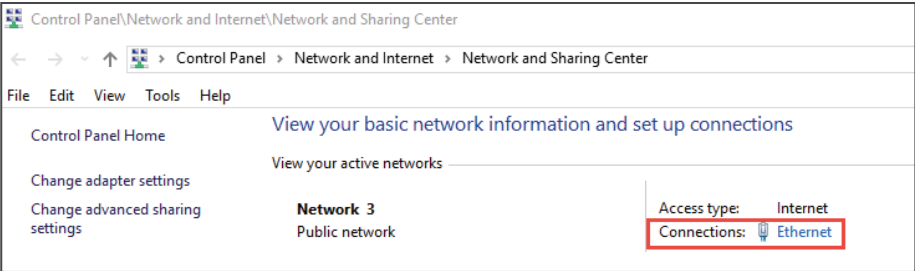


- 5. On the **General** tab, select Obtain an **IP address automatically** and then click **OK**.

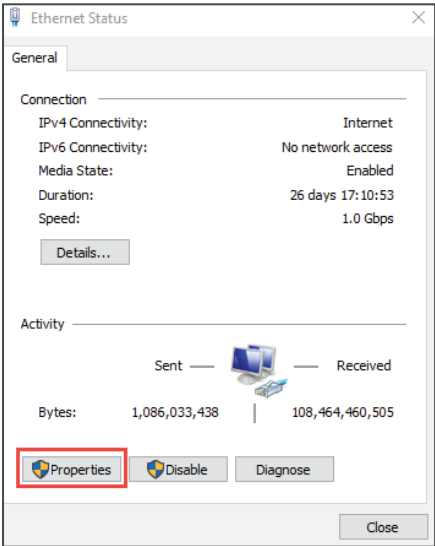


Configure the IN Cell Analyzer workstation

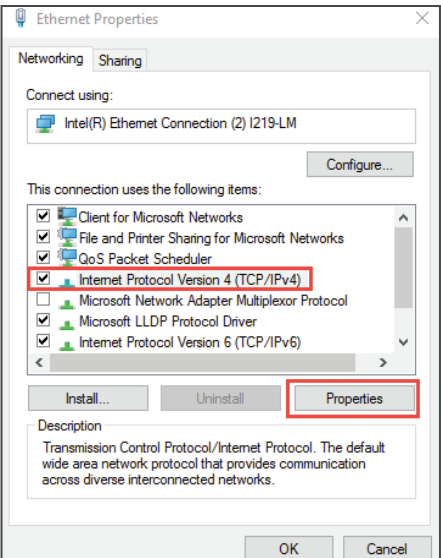
- 1. On the Windows Start menu, click .
- 2. Search for and display the “Network and Sharing Center” and then click **Ethernet** to display the Ethernet Status dialog box.



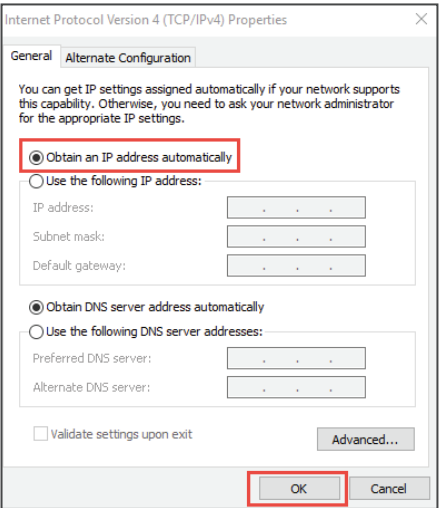
3. In the Ethernet Status dialog box, click **Properties**.



4. Ensure the check box for **Internet Protocol Version 4 (TCP/IPv4)** is selected. Click to highlight the item and then click **Properties**.
Note: **Internet Protocol Version 6 (TCP/IPv6)** may also be selected.



5. On the **General** tab, select **Obtain an IP address automatically** and then click **OK**.



Configure folder on the IN Cell Analyzer workstation

1. On the IN Cell Analyzer workstation, create a folder named "INCartaShare."
2. Right-click the newly created folder, select Properties, then select the **Sharing** tab.
3. Click **Share**.
4. In the drop-down list for the **Add** field, click **Everyone**.
5. Click **Add**.
6. Set **Permission Level** to "Read/Write."
7. Click **Share**.
8. Note the location of the folder in the File Sharing menu. For example, [\\MAHI\INCartaShare](#).
9. Click **Done** and then **Close**.

Configure folder on the IN Carta workstation

1. On the IN Carta workstation, open a file browser, browse to the location of the folder selected in Step 8 of the section "Configure folder on the IN Cell Analyzer workstation". For example, [\\MAHI\INCartaShare](#).
2. Once you locate the folder, enter the **username** and **password** of the IN Carta workstation.
3. Select **Remember my credentials**.

You should now see the empty folder on the IN Carta workstation.

Map network drive

1. On the IN Carta workstation, open the Windows Start menu, select **Computer**, and then **Map Network Drive**.
 - a. In the **Drive** field, select "I:".
 - b. In the **Folder** field, enter the location of the folder selected in Step 8 of the section "Configure folder on the IN Cell Analyzer workstation." For example, [\\MAHI\INCartaShare](#).
 - c. Select the **Reconnect at log on** check box.
 - d. Select the **Connect using different credentials** check box.
 - e. Click **Finish**.
2. Enter the **password**. You will now see the mapped network drive.
3. Test the connection by copying data into the INCartaShare folder on the IN Cell Analyzer workstation and then confirm that you can open the data on the IN Carta workstation.
4. Acquire IN Cell Analyzer data and save it to the INCartaShare folder.

www.gelifesciences.com

GE and the GE Monogram are trademarks of General Electric Company.

© 2017 General Electric Company

All goods and services are sold subject to the terms and conditions of sale of the company within GE Healthcare which supplies them. A copy of these terms and conditions is available on request. Contact your local GE Healthcare representative for the most current information.

GE Healthcare Bio-Sciences AB, Björkgatan 30, SE-751 84 Uppsala, Sweden

GE Healthcare UK Ltd, Amersham Place, Little Chalfont, Buckinghamshire, HP7 9NA, UK

GE Healthcare Dharmacon, Inc., 2650 Crescent Dr., Lafayette, CO 80026, USA

HyClone Laboratories, Inc., 925 W 1800 S, Logan, UT 84321, USA

GE Healthcare Europe GmbH, Munzinger Strasse 5, D-79111 Freiburg, Germany

GE Healthcare Japan Corporation, Sanken Bldg. 3-25-1, Hyakunincho, Shinjuku-ku, Tokyo 169-0073, Japan

For local office contact information, visit: www.gelifesciences.com/contact

GE Healthcare Bio-Sciences Corp.
100 Results Way
Marlborough, MA 01752
USA

29280192 AA 11/2017